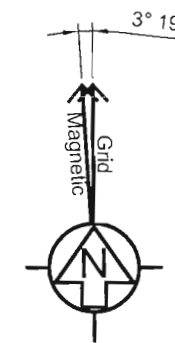
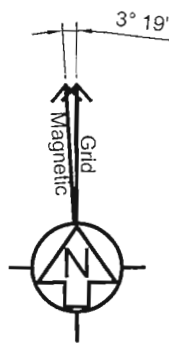
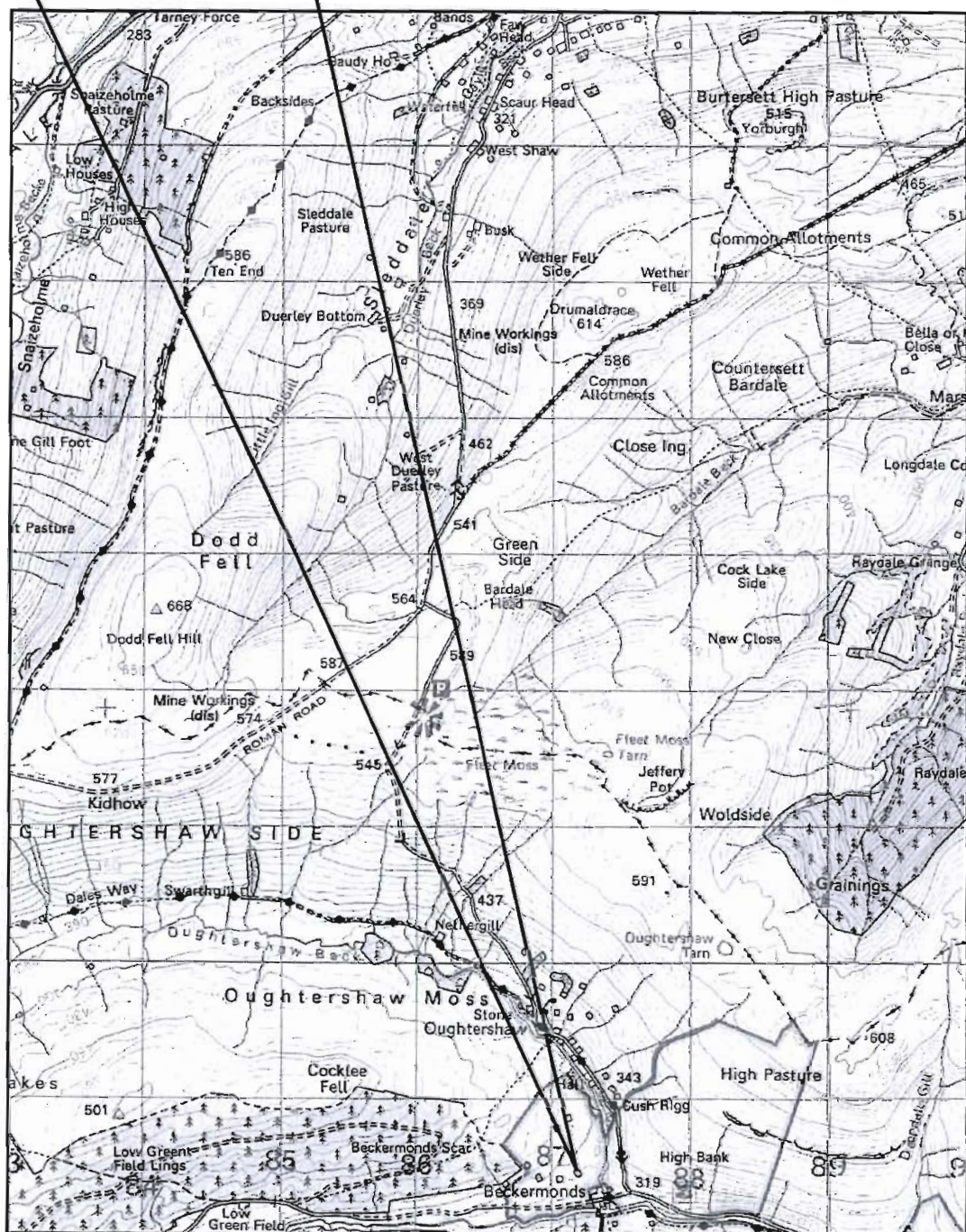


The design of this site is in accordance with the following design documentation:
 Radio Base Station Design Guide & Specification - Issue Date 03.02.06
 Technical Guidance Notes - TGN 0092 to TGN 0124 inclusive.

RECEIVED BY:-
 Yorkshire Dales National Park Authority
 27 MAY 2014



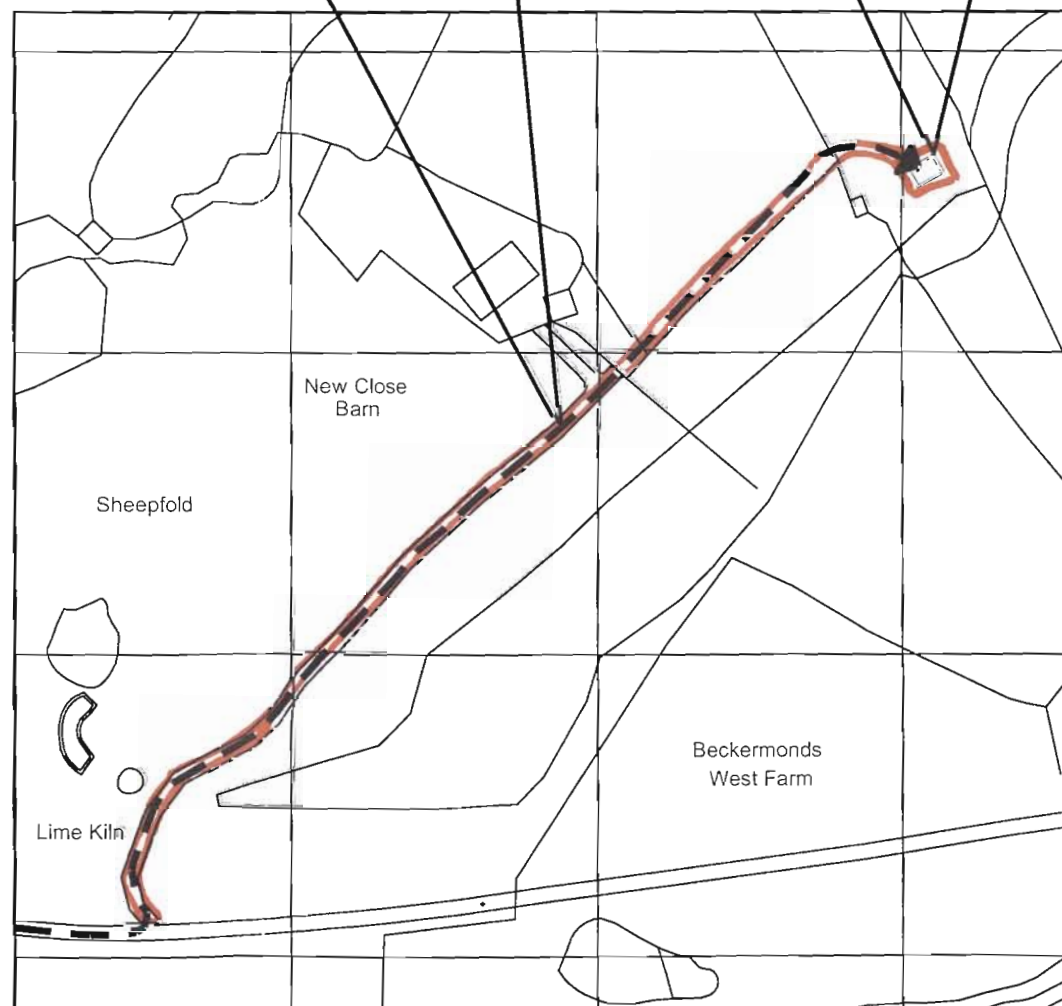
SITE LOCATION



LOCATION PLAN (1:50000)

ACCESS ROUTE

SITE LOCATION



LOCATION PLAN (1:2500)

NOTE: ORIGINAL DRAWING SIZE A3

NOTES

GENERAL NOTES

Based upon Ordnance Survey maps with the permission of the Controller of Her Majesty's Stationery Office. © Crown Copyright.

Consultant Licence No. : 0100023487 & 100020449

O.S. Ref. : E 387207 , N 480458

Lat : 54219685

Long: -2.197693

DIRECTIONS.

AT THE END OF M65 MOTORWAY JOIN THE ROUNDABOUT AND TAKE THE FIRST EXIT ONTO THE A6068. AFTER A 1.5 MILES AT THE ROUNDABOUT TAKE THE 1ST EXIT ONTO THE A56, AFTER 7 MILES AT THE ROUNDABOUT TAKE THE 2ND EXIT ONTO THE A59. AT THE FOLLOWING ROUNDABOUT TAKE THE 2ND EXIT ONTO THE A65. AT THE ROUNDABOUT TAKE THE 1ST EXIT ONTO GRASSINGTON ROAD - B6265, BEAR LEFT ONTO THE B6160. TURN LEFT ONTO DUBB'S LANE, BEAR LEFT ONTO STUBBING LANE, BEAR RIGHT, TURN LEFT. PASS THROUGH BECKERMONDS AND THERE IS AN ACCESS TRACK ON THE RIGHT HAND SIDE. THE SITE CAN BE LOCATED AT THE END OF THIS TRACK

Rev	Date	Amendments	Drawn By	Approved By
B	01.04.14	SITE DIFFERENCE AMENDED	DB	RWM
A	27.03.14	PLANNING	DB	RWM

heyrod  communicating excellence

Thornley House,
Overens Street,
Oldham,
OL4 1LA
Tel: 0161 6224160
Fax: 0161 6224161

AIRWAVE
 Airwave Solutions Ltd
 Charter Court, 50 Windsor Rd, Slough, Berkshire. SL1 2EJ.

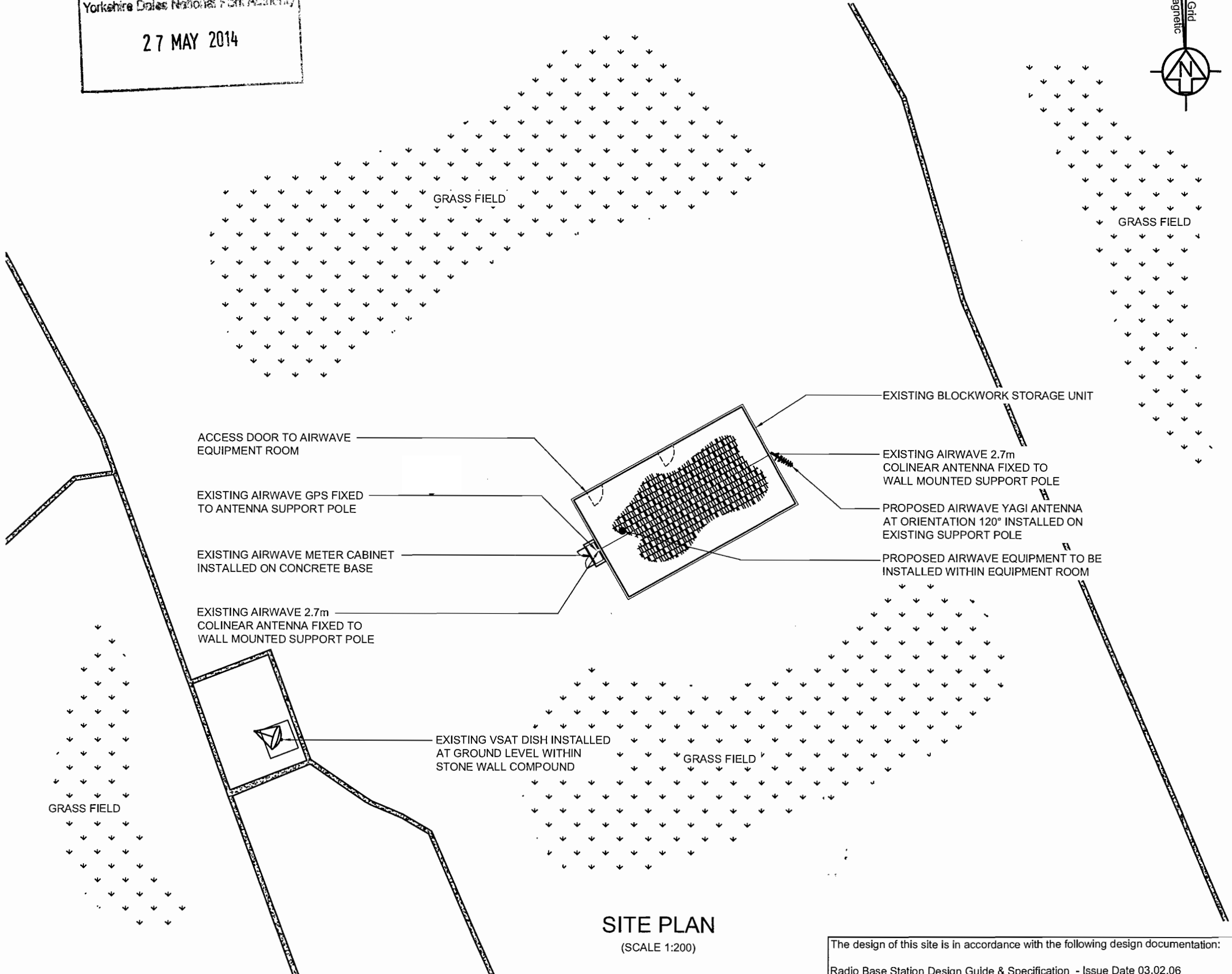
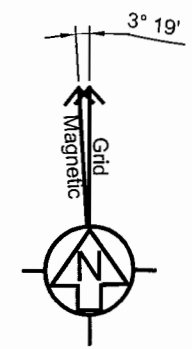
Job Title
**BECKERMONDS FARM, LANGSTROTHDALE
 BUCKDEN, NORTH YORKSHIRE
 BD23 5YL**

Drawing Title
**PLANNING
 SITE LOCATION PLANS
 SHEET 10**

Scale AS SHOWN@A3	Consultant reference -	
Drawn by DB	Checked by RWM	Approved by MNH
Date Drawn 26.04.14	Date Checked 26.04.14	Date Approved 26.04.14

Drawing No. **NYK022-GA-10**

RECEIVED BY:-
Yorkshire Dales National Park Authority
27 MAY 2014



SITE PLAN
(SCALE 1:200)

The design of this site is in accordance with the following design documentation:
Radio Base Station Design Guide & Specification - Issue Date 03.02.06
Technical Guidance Notes - TGN 0092 to TGN 0124 inclusive.

NOTE: ORIGINAL DRAWING SIZE A3

NOTES

- This drawing to be read in conjunction with SITEREF Series drawings and standard Airwave drawings.
- All dimensions are in mm unless otherwise stated.

Airwave - Power Supply			
Power Supply:	EXISTING		
Airwave - Cabin Schedule			
Manf.	-	Colour Ref.	-
Type	PURPOSE BUILT	Gland Pos. A/B/C	A
Dimension (mm)	9800x5800x5000	Door Hinge L/R	L
Material	MASONRY	Pre assembled	X Flatpack
Airwave - Meter Cabinet Schedule			
Manf.	TFL	Colour Ref.	10A05
Type	Standard	Material	Galvanised Steel
Dimension (mm)	1000x450x1000 High		
Airwave - PER Details			
No. of Carriers	-		
Autonomy	6 Hours		
System Type	TBC		

Rev	Date	Amendments	Drawn By	Approved By
B	01.04.14	SITE DIFFERENCE AMENDED	DB	RWM
A	26.04.14	PLANNING ISSUE	DB	RWM

heyrod  Thornley House, Overens Street, Oldham, OL4 1LA
 communicating excellence Tel: 0161 6224160 Fax: 0161 6224161

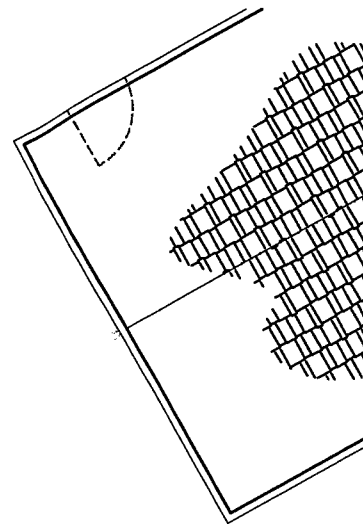
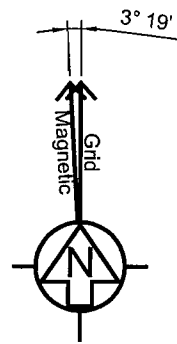
AIRWAVE
 Airwave Solutions Ltd
 Charter Court, 50 Windsor Rd, Slough, Berkshire. SL1 2EJ.

Job Title
BECKERMONDS FARM, LANGSTROTHDALE BUCKDEN, NORTH YORKSHIRE BD23 5YL

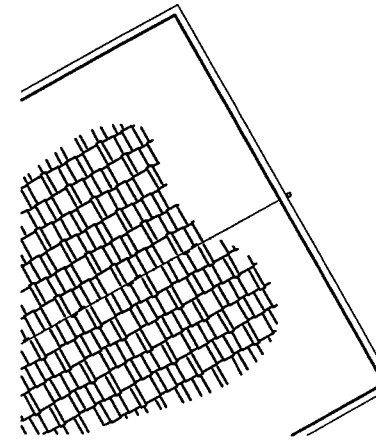
Drawing Title
PLANNING SITE PLAN SHEET 11

Scale AS SHOWN@A3	Consultant reference	
Drawn by DB	Checked by RWM	Approved by MNH
Date Drawn 26.04.14	Date Checked 26.04.14	Date Approved 26.04.14
Drawing No. NYK022-GA-11		

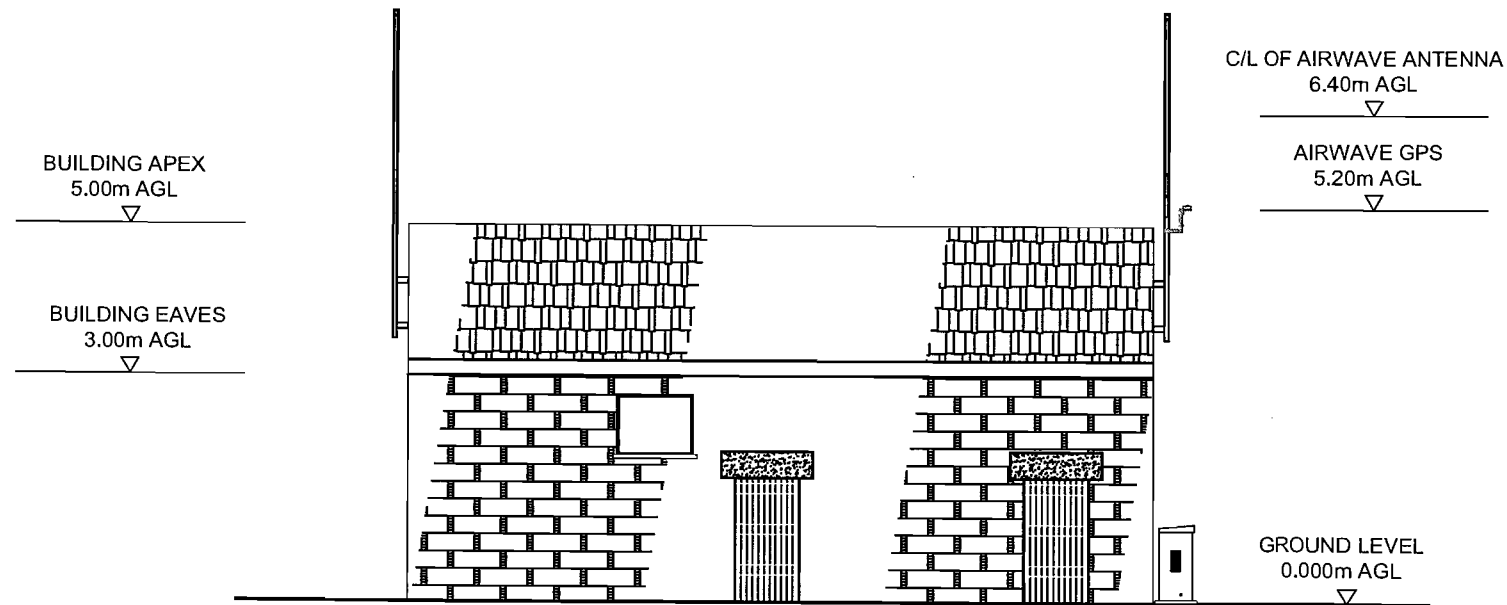
RECEIVED BY:-
Yorkshire Dales National Park Authority
27 MAY 2014



ANTENNA PLAN 1
(SCALE 1:100)



ANTENNA PLAN 2
(SCALE 1:100)



EXISTING NORTH EAST ELEVATION
(SCALE 1:100)

NOTE: ORIGINAL DRAWING SIZE A3

NOTES

1. This drawing to be read in conjunction with SITEREF Series drawings and standard Airwave drawings.
2. All dimensions are in mm unless otherwise stated.

Existing Airwave Antenna / Dish Schedule

Antenna Configuration - N/A

Duplexer required - N

Antenna/Dish Ref.	Antenna Type	Size (mm)	Height c/l A.G.L. (m)	Antenna Bearing	Cable Type	Cable Length (m)
TX	COLINEAR	2700	6.00	TBC	TBC	13.00
TX/RX	COLINEAR	2700	6.00	TBC	TBC	6.00
VSAT	DISH	9000	1.5	TBC	TBC	TBC
-	-	-	-	-	-	-
-	-	-	-	-	-	-
-	-	-	-	-	-	-

SUPERSEDED

Rev	Date	Amendments	Drawn By	Approved By
B	01.04.14	SITE DIFFERENCE AMENDED	DB	RWM
A	26.04.14	PLANNING ISSUE	DB	RWM

heyrod  Thornley House, Overens Street, Oldham, OL4 1LA
 communicating excellence Tel: 0161 6224160 Fax: 0161 6224161

AIRWAVE
 Airwave Solutions Ltd
 Charter Court, 50 Windsor Rd, Slough, Berkshire. SL1 2EJ.

Job Title
BECKERMONDS FARM, LANGSTROTHDALE BUCKDEN, NORTH YORKSHIRE BD23 5YL

Drawing Title
PLANNING EXISTING ELEVATION SHEET 13

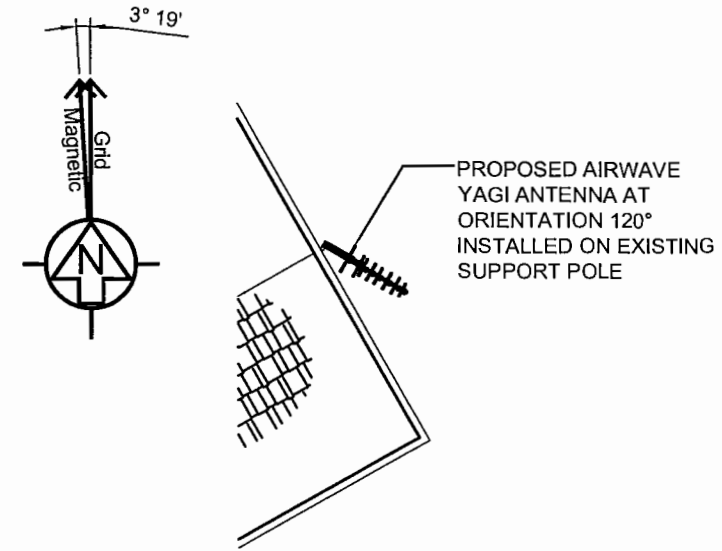
Scale AS SHOWN@A3	Consultant reference -
Drawn by DB	Checked by RWM
Date Drawn 26.04.14	Date Checked 26.04.14
	Approved by MNH
	Date Approved 26.04.14

Drawing No. **NYK022-GA-12**

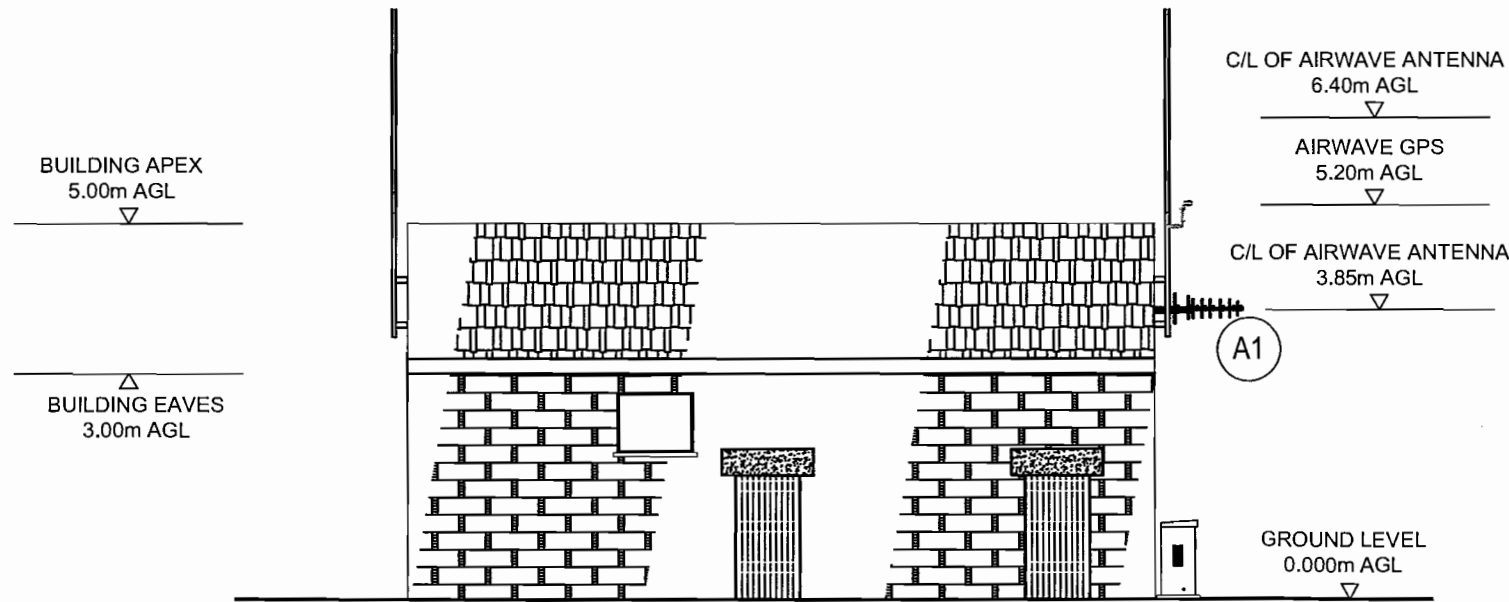
The design of this site is in accordance with the following design documentation:
 Radio Base Station Design Guide & Specification - Issue Date 03.02.06
 Technical Guidance Notes - TGN 0092 to TGN 0124 inclusive.

RECEIVED BY:
Yorkshire Dales National Park Authority

27 MAY 2014



PROPOSED ANTENNA PLAN
(SCALE 1:100)



PROPOSED SOUTH EAST ELEVATION
(SCALE 1:100)

NOTE: ORIGINAL DRAWING SIZE A3

NOTES

1. This drawing to be read in conjunction with SITEREF Series drawings and standard Airwave drawings.
2. All dimensions are in mm unless otherwise stated.

Proposed Airwave Antenna / Dish Schedule						
Antenna Configuration - N/A						
Duplexer Required - N						
Antenna/Dish Ref.	Antenna Type	Size (mm)	Height c/l A.G.L. (m)	Antenna Bearing	Cable Type	Cable Length (m)
A1	YAGI ANTENNA	1500	3.85	120°	LDF 4-50A	8
-	-	-	-	-	-	-
-	-	-	-	-	-	-
-	-	-	-	-	-	-
-	-	-	-	-	-	-
-	-	-	-	-	-	-

SUPERSEDED

Rev	Date	Amendments	Drawn By	Approved By
B	01.04.14	SITE DIFFERENCE AMENDED	DB	RWM
A	26.04.14	PLANNING ISSUE	DB	RWM

heyrod communicating excellence

Thornley House, Overens Street, Oldham, OL4 1LA
Tel: 0161 6224160 Fax: 0161 6224161

AIRWAVE
Airwave Solutions Ltd
Charter Court, 50 Windsor Rd, Slough, Berkshire. SL1 2EJ.

Job Title
BECKERMONDS FARM, LANGSTROTHDALE
BUCKDEN, NORTH YORKSHIRE
BD23 5YL

Drawing Title
PLANNING
PROPOSED ELEVATION
SHEET 14

Scale AS SHOWN@A3	Consultant reference -	
Drawn by DB	Checked by RWM	Approved by MNH
Date Drawn 26.04.14	Date Checked 26.04.14	Date Approved 26.04.14

Drawing No. NYK022-GA-13

The design of this site is in accordance with the following design documentation:
Radio Base Station Design Guide & Specification - Issue Date 03.02.06
Technical Guidance Notes - TGN 0092 to TGN 0124 inclusive.