

M. LAND REGISTRY

NYK78635

ANCE SURVEY
REFERENCE

LXV 4

Scale 1:2500 1:2500

NORTH YORKSHIRE

DISTRICT

RICHMONDSHIRE

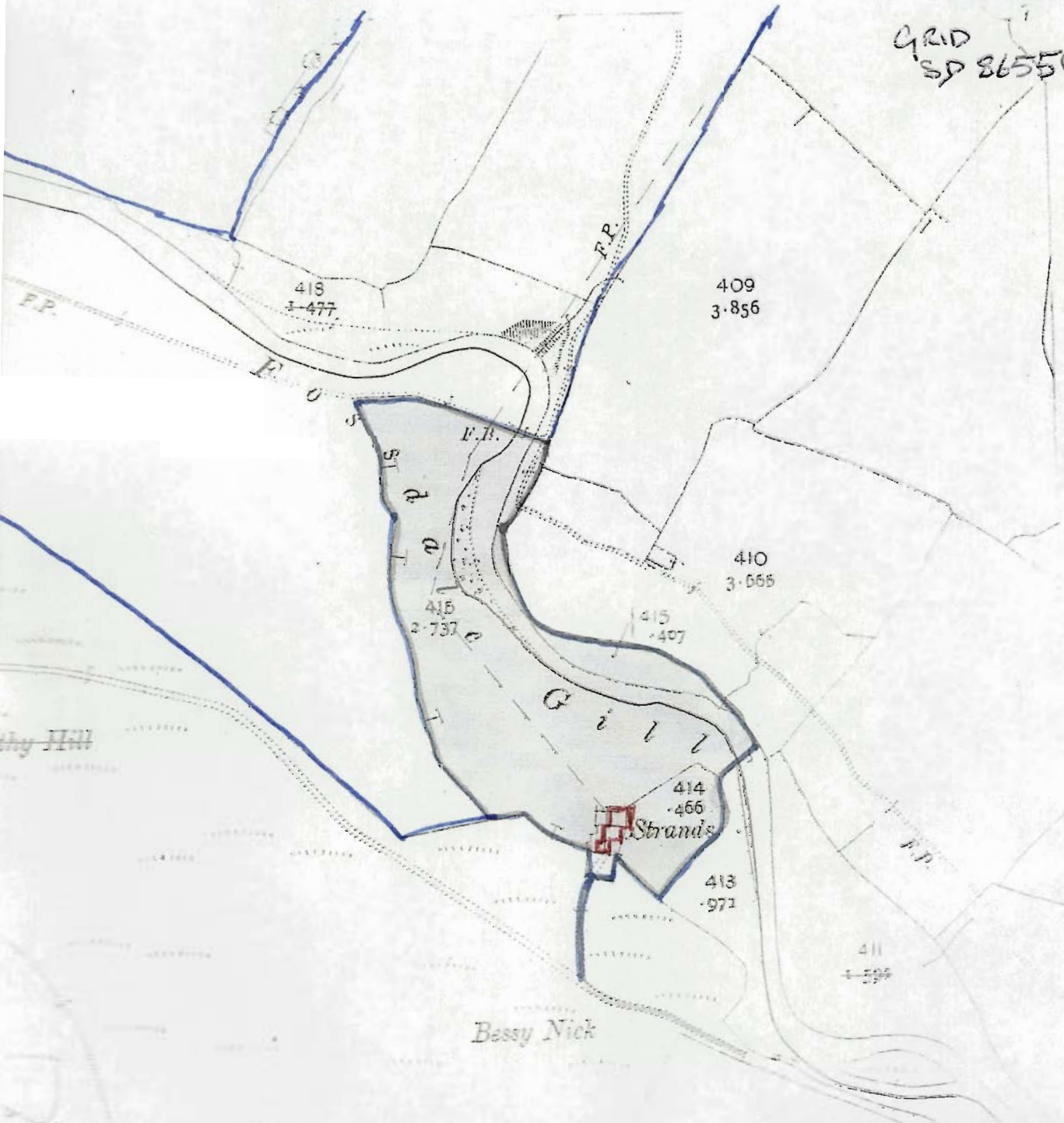
© Crown copyright

NOTE: AREAS ON THIS PLAN ARE EXPRESSED
IN ACRES AND HECTARES.

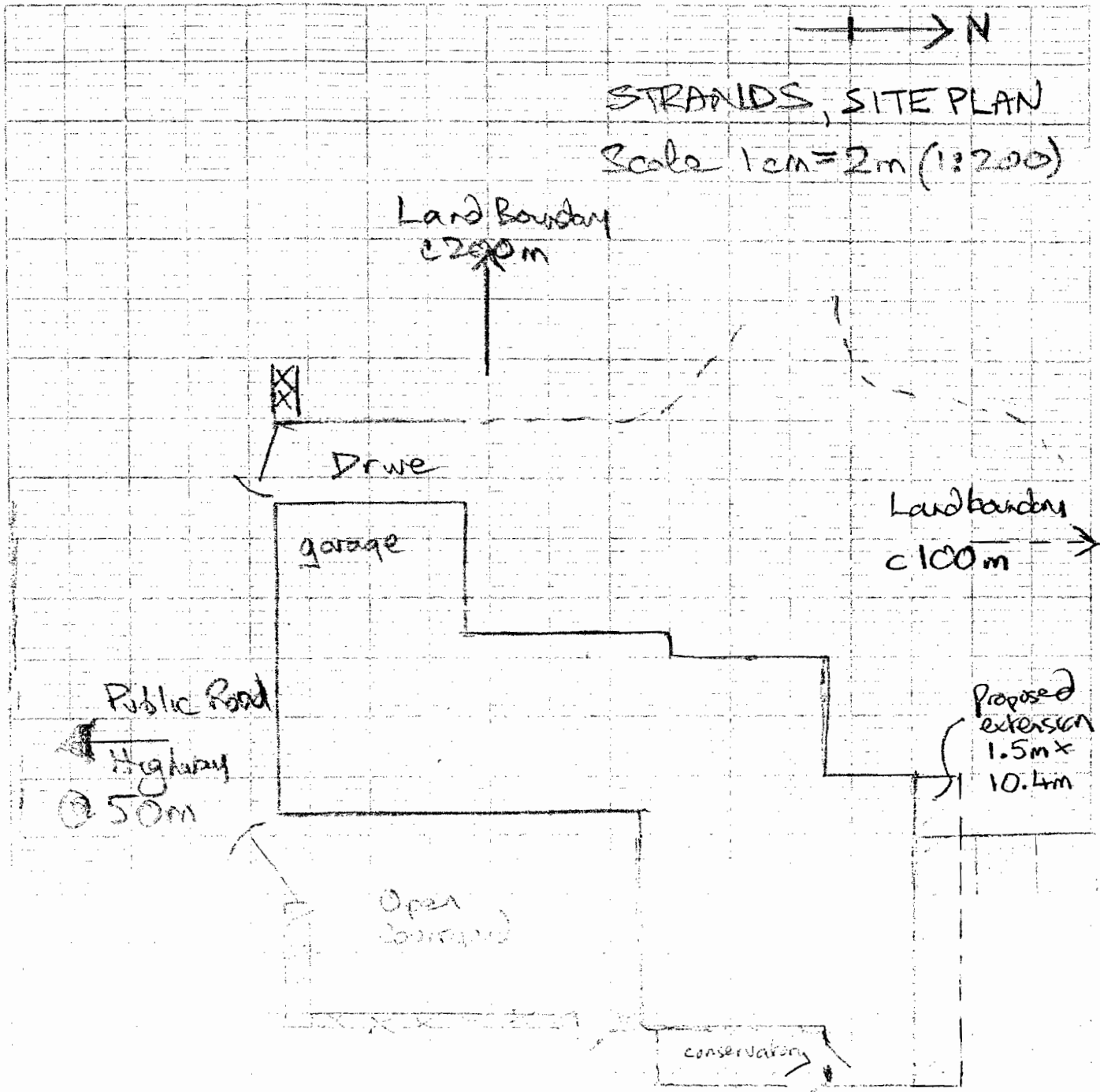
LOCATION PLAN

- building
- land ownership

GRID
SP 86559207



RECEIVED BY:-
 Yorkshire Dales National Park Authority
 - 1 JUL 2008



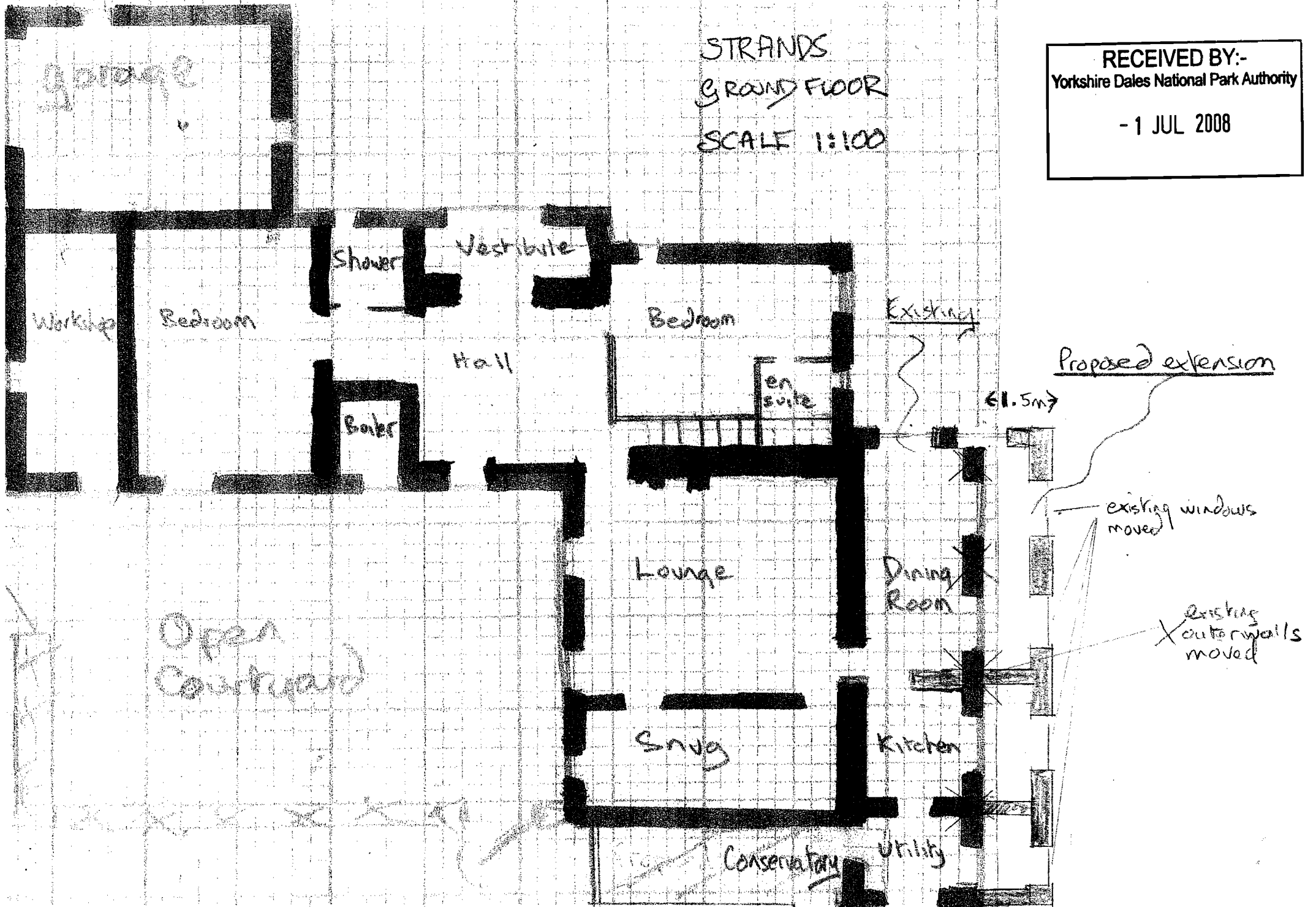
RECEIVED BY:-
 Yorkshire Dales National Park Authority
 - 1 JUL 2008

Land boundary
 70m

Location: Fossdale, Swarcliffe, DL8 3L1
 01937 3555 7207

STRANDS
GRAND FLOOR
SCALE 1:100

RECEIVED BY:-
Yorkshire Dales National Park Authority
- 1 JUL 2008

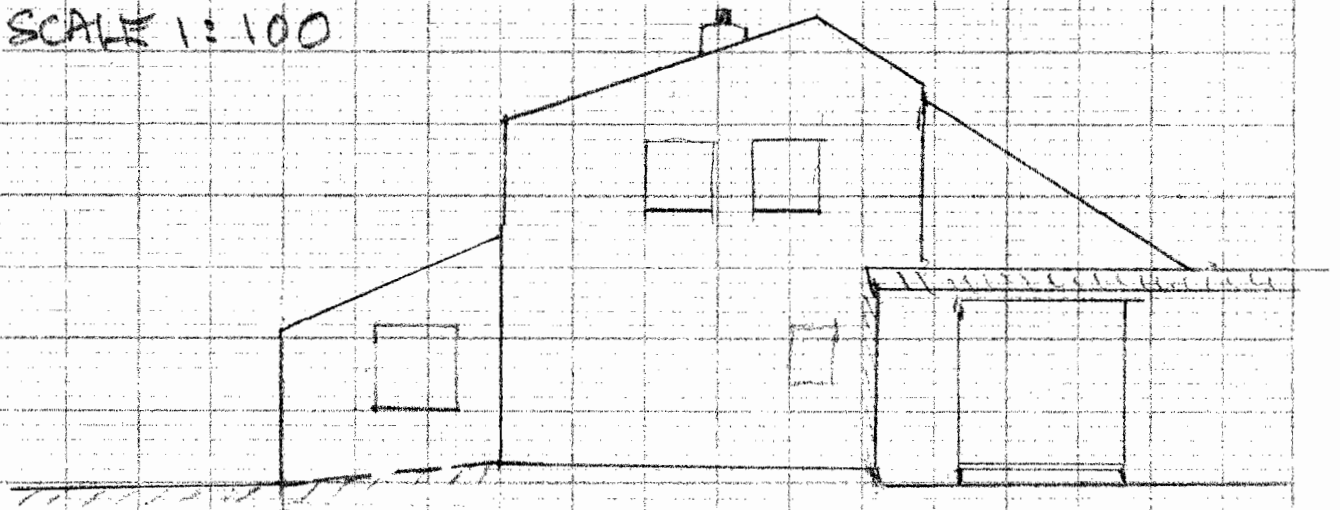


STRANDS

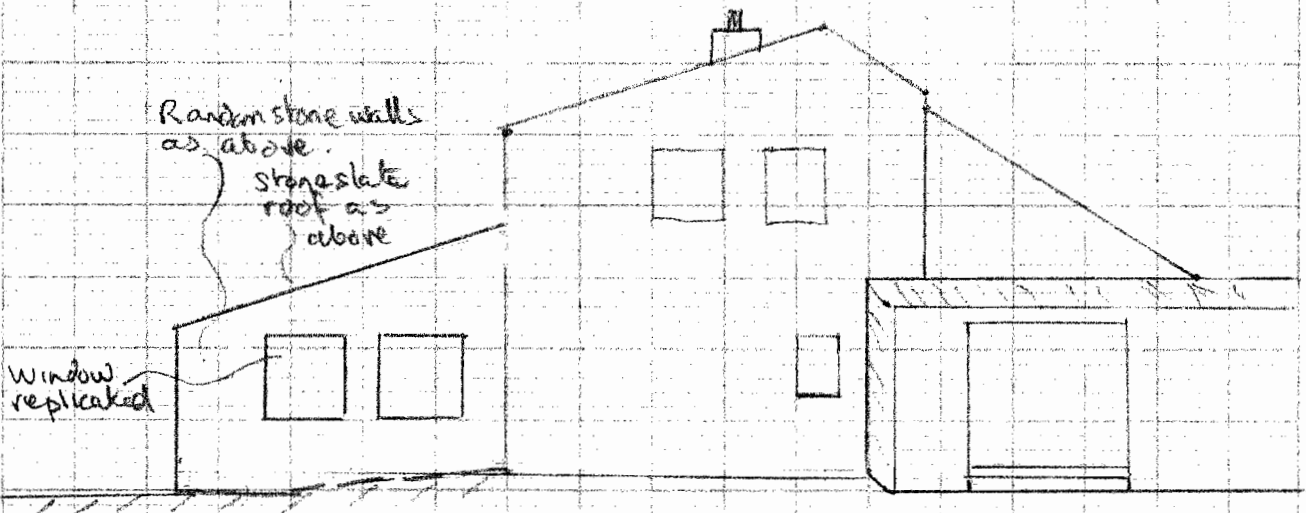
CURRENT

WEST ELEVATION

SCALE 1:100



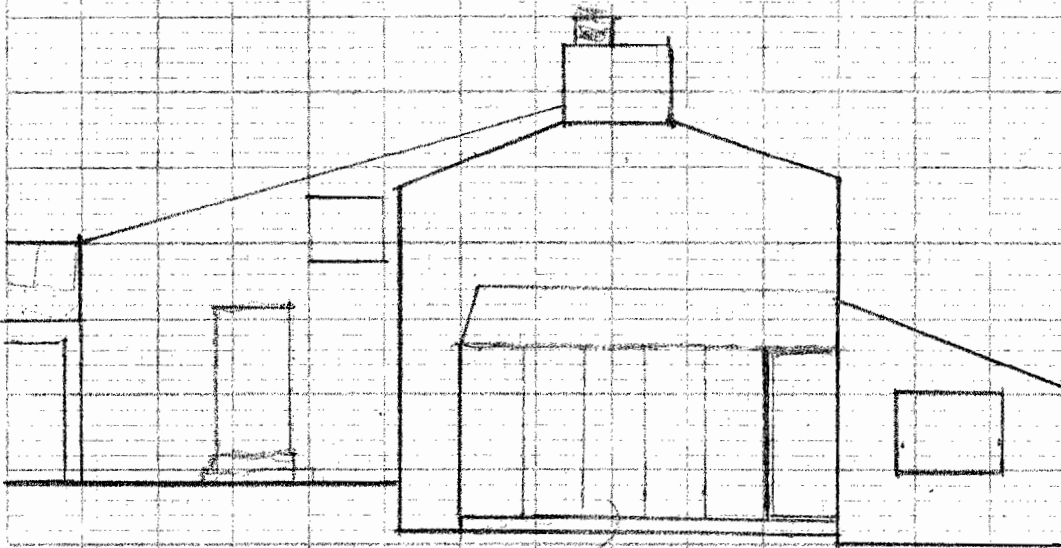
PROPOSED



RECEIVED BY:-
Yorkshire Dales National Park Authority
- 1 JUL 2008

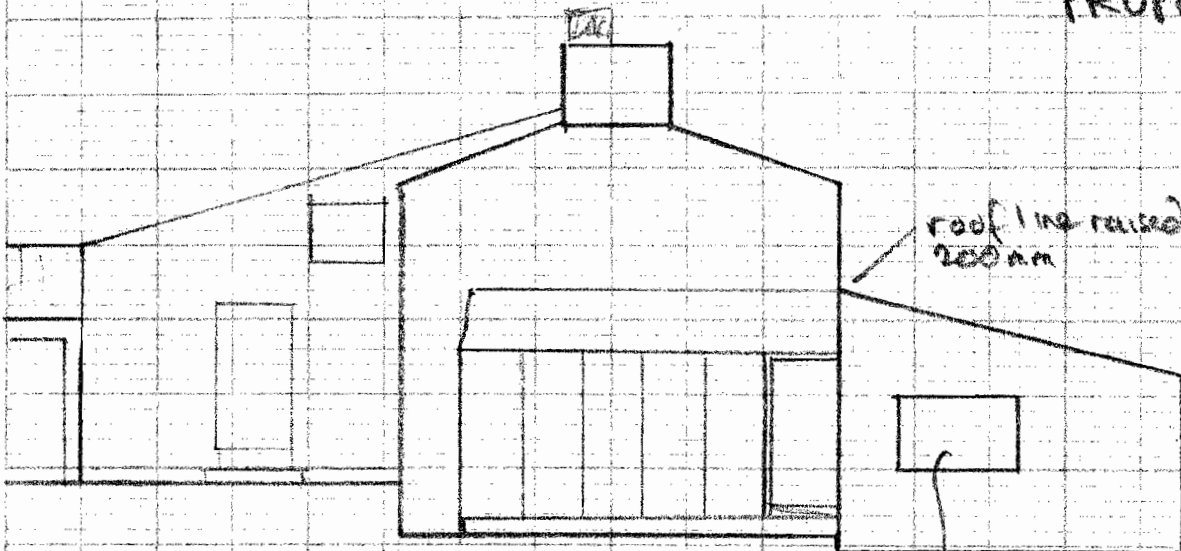
EAST ELEVATION
SCALE 1:100

CURRENT



conservatory

PROPOSED



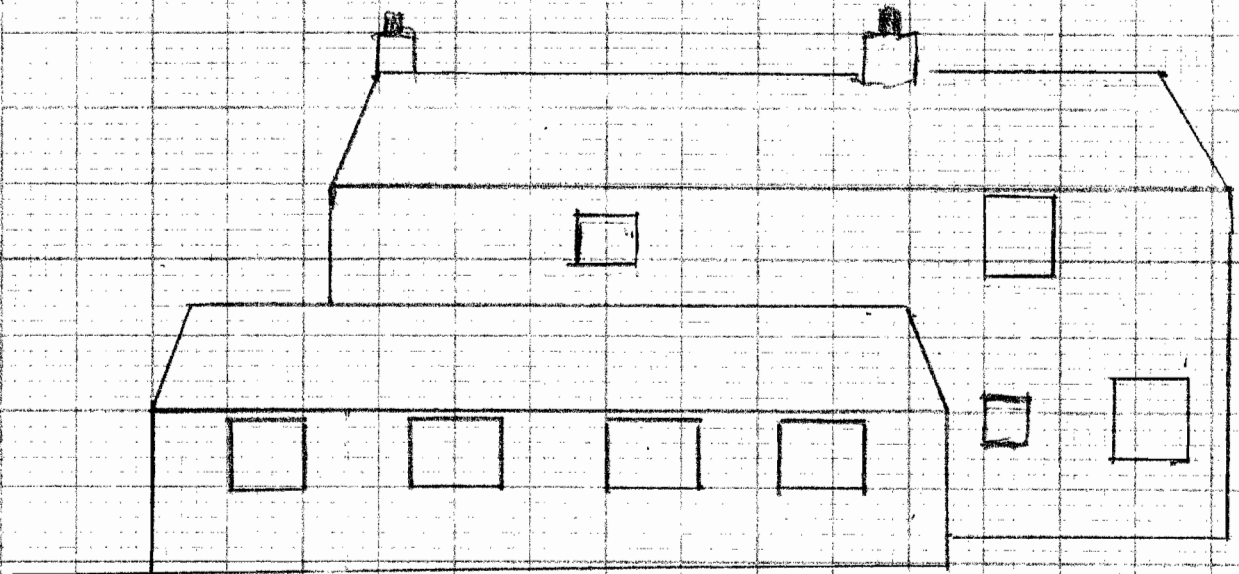
roof line raised
200mm

raise
window

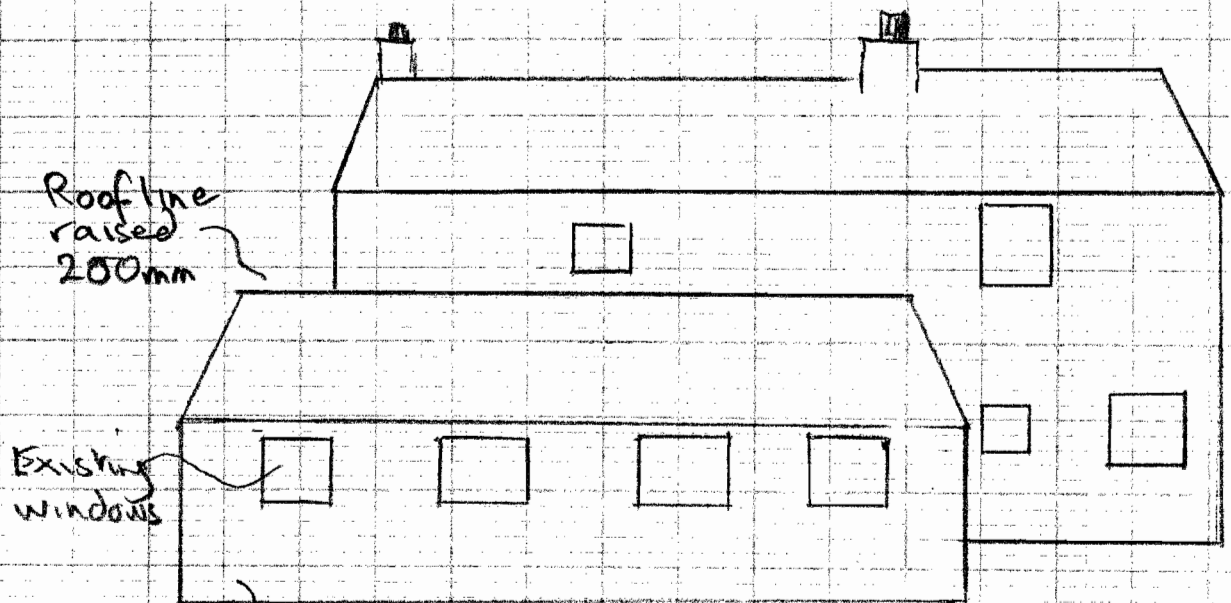
RECEIVED BY:-
Yorkshire Dales National Park Authority
- 1 JUL 2008

NORTH ELEVATION
SCALE 1:100

CURRENT



PROPOSED



Roofline raised 200mm

Existing windows

Existing wall moved forward 1.5m and raised 300mm

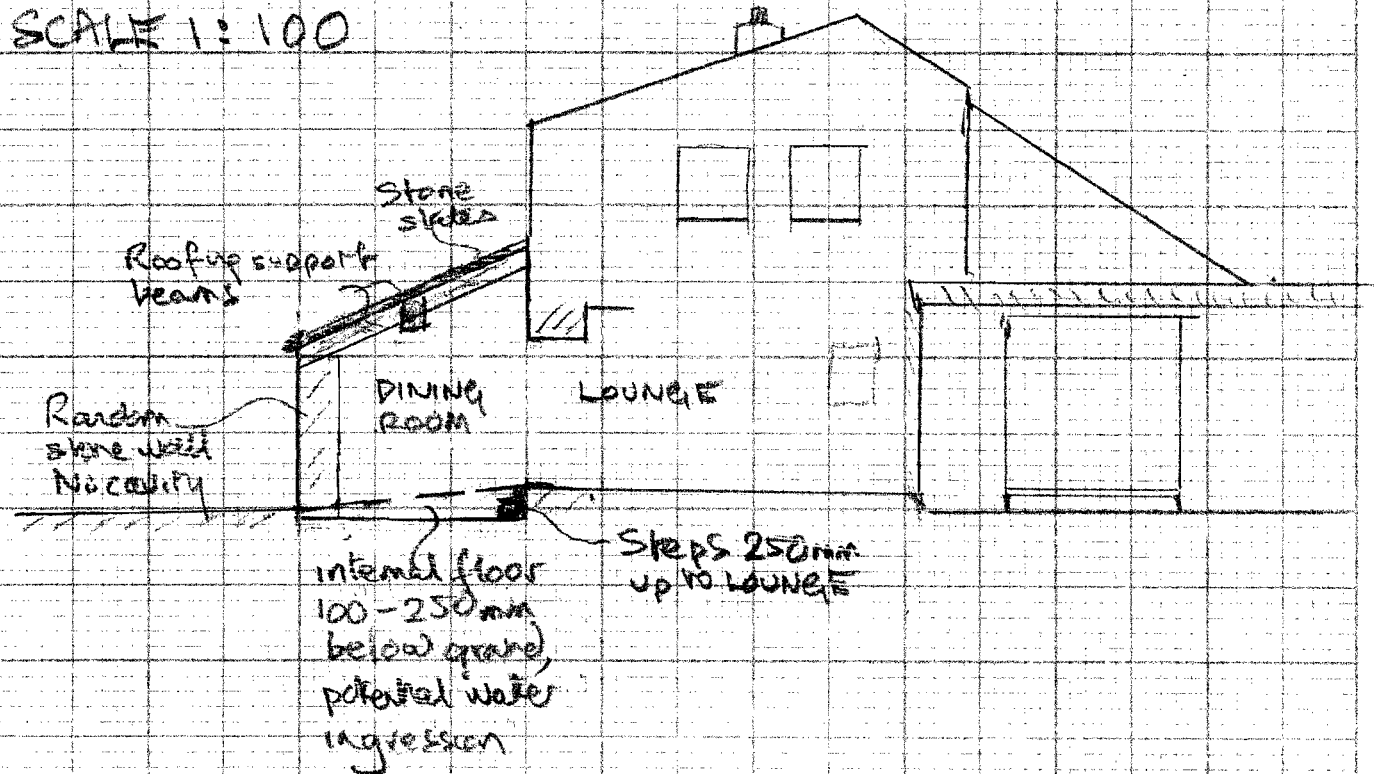
RECEIVED BY:-
Yorkshire Dales National Park Authority
- 1 JUL 2008

STRANDS

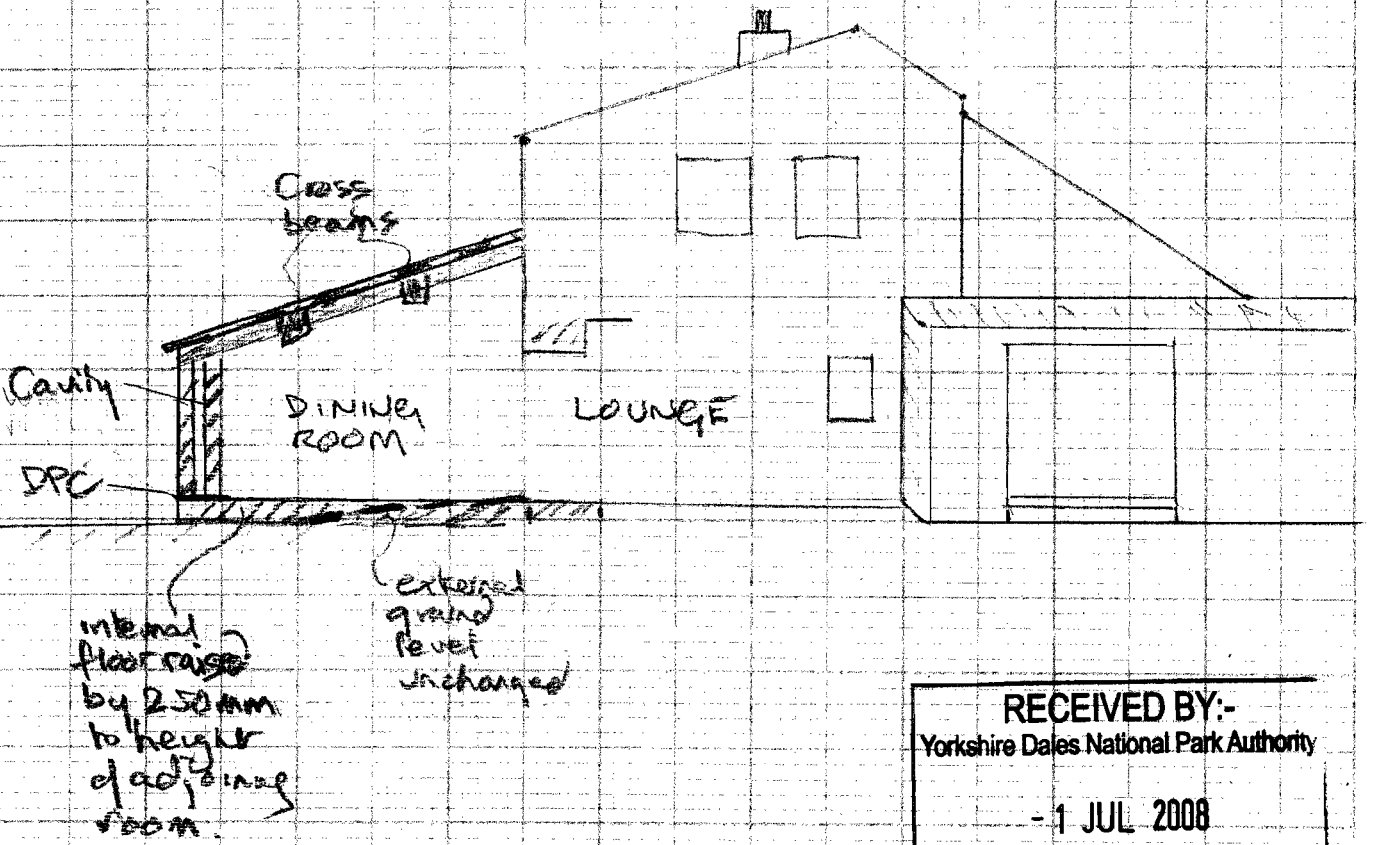
CURRENT

WEST SECTION

SCALE 1:100



PROPOSED



RECEIVED BY:-
 Yorkshire Dales National Park Authority
 - 1 JUL 2008