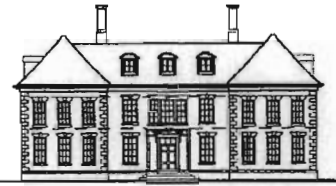


CHRISTOPHER HODGES PLANNING AND DESIGN SERVICE



31st May 2016.

Yorkshire Dales National Parks Authority
Planning Dept
Yoredale
Bainbridge
North Yorkshire,
DL8 3EL

Tree Care Plan

To accompany application; Barn, Red gate lane, Long Shaw, Askrigg. DL8 3JQ.

The application is for the conversion of an existing barn to create a three bedroom dwelling.

The plan attached to this letter shows the positions of the trees next to the barn. On inspection I can confirm that there are three ash trees opposite the barn with a small road/track between them, they are approximately Tree 1; 12m diameter x 20m height, Tree 2; 10m diameter 16m height and Tree 3; 8m diameter x 15m height. Tree 1 is proposed to be removed after a tree assessment has found the tree to rotten internally, the assessment has been submitted to YDNPA.

The proposed barn conversion is located 8 metres away from the trunk of Tree 1, 11 metres away from Tree 2 and approximately 16metres from the trunk of Tree 3. We do not envisage that any harm will occur to the remaining trees due to how far they are situated from the barn. Every care will be taken not to disturb the root systems whilst the conversion takes place.

Yours Faithfully
Christopher Hodges

CH Planning and Design

